

# Have You Grown Accustomed to Life in Japan?

## How to Dispose of Garbage Properly in Kita City

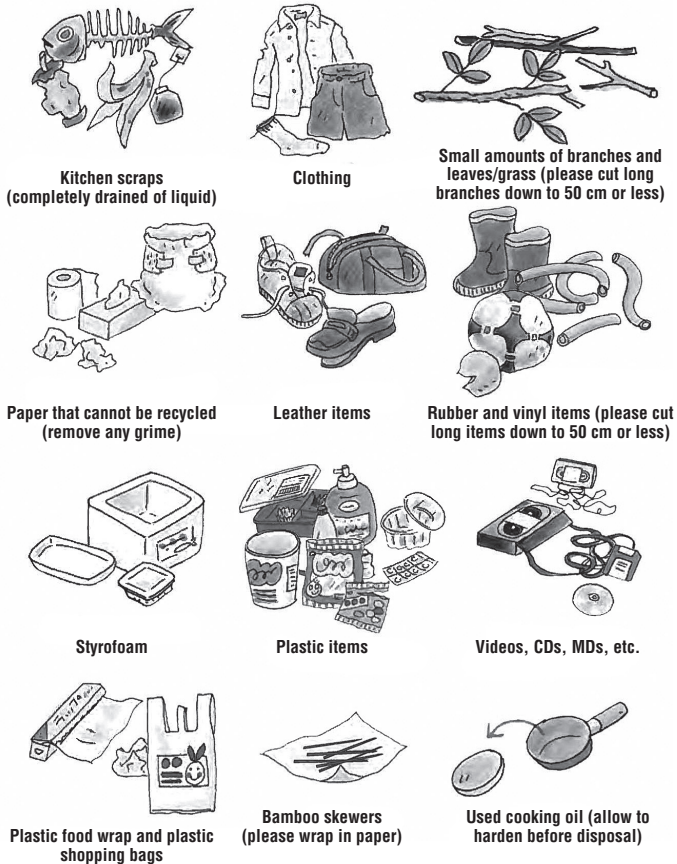
### Rules for Sorting Garbage

In Japan, there are a lot of confusing matters and social rules that must be observed in everyday life. In this issue, we will describe the rules for disposing of garbage so that you can enjoy life comfortably with your neighbors.

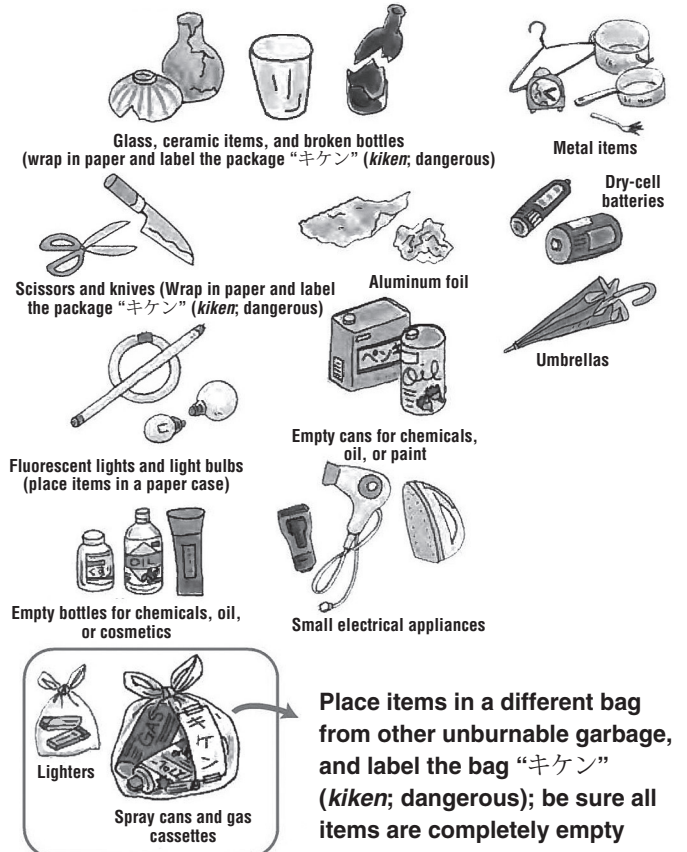
### Rules for Sorting Garbage

Garbage must be sorted according to category—burnable garbage, unburnable garbage, and recyclable resources. Each type is collected on designated days.

#### 1. Burnable Garbage (collected twice a week)



#### 2. Unburnable Garbage (collected twice a month)



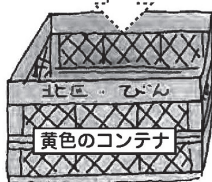
#### 3. Bottles, Cans, and PET Bottles (collected once a week)

Items are collected at the garbage collection station (where the collection containers and nets are located). Do not place items in a bag; lightly rinse them out and place them directly in the container or net.

Notes: 1. Dispose of the caps as burnable garbage or unburnable garbage, depending on the material they are made of.

2. Items that will not be collected: any that have leftover juice or garbage inside, that contained oil or chemicals, as well as any that are soiled.

##### Bottles/Cans Bottles/cans for food or beverages

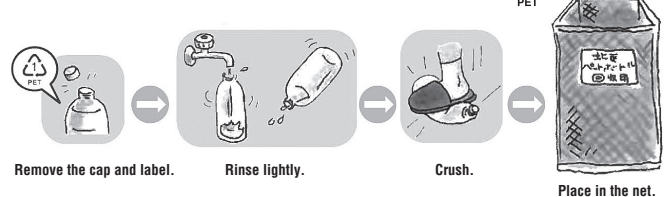


Yellow container



Blue container

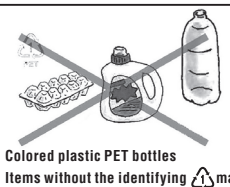
##### PET bottles Bottles with the identifying PET mark



Note: Also collected in front of supermarkets and convenience stores.

Please dispose of the following items as burnable garbage:

- ◆ Colored plastic PET bottles
- ◆ Items with the identifying PET mark that are not bottles
- ◆ Bottles without the identifying PET mark

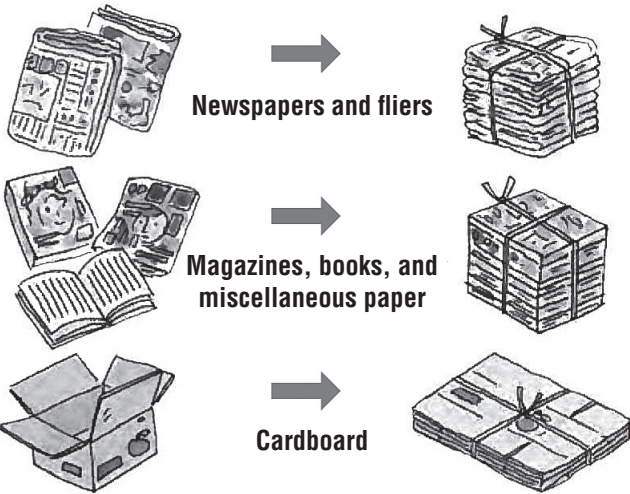


#### 4. Used Paper (collected once a week)

**Note: Collected even on rainy days.**

**Bundle with string according to type before disposal.**

**Do not bundle with adhesive tape.**



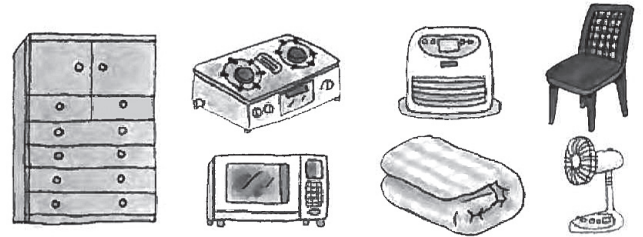
**Items That Are Not Collected as Used Paper (dispose with burnable garbage)**  
Adhesive tape, items made of material other than paper (such as plastic film), paper cups, plastic coated paper, thermal paper/carbon paper, and paper that is dirty (with oil, etc.)

**Note: Please cooperate with neighborhood groups in their used paper collection drives.**

#### 5. Oversized Garbage (please call to arrange a pickup date)

**Items as large as or larger than a cube of 30 cm on all sides are considered oversized garbage.**

**Please call in advance to arrange pickup.**



**Application (to arrange a pickup date or for information on fees)**

**Oversized Garbage Reception Center**  
**Tel: 5296-7000**

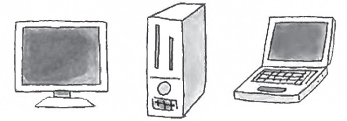
**Note: Oversized items that were used in business cannot be collected.**



**There is a fee for the collection of oversized garbage.**

#### • Recycling of Computers and Household Appliances

A recycling fee is required for used personal computers that do not bear the identifying recycling mark. Please call the product's manufacturer concerning collection procedures. In addition, used TVs, refrigerators/freezers, air conditioners, and laundry machines/dryers must be recycled by law. To dispose of these items, you must either ask the store where you originally purchased the item or the store where you are buying a replacement to handle your used appliance. If you are unable to get a store to help you, please call the Household Appliance Recycling Reception Center.



#### • Hazardous/Dangerous Items (such as gas cassettes, kerosene, and chemicals)

The city does not collect items that are difficult to handle (such as automobiles [including parts], motorcycles, tires, fire extinguishers, soil, liquids, bricks, and concrete blocks). Please consult Kita City Waste Collection Office.



#### Please observe the following rules:

1. Dispose of items according to type at the garbage collection station no later than 8 a.m. on the designated collection day. The collection schedule varies depending on the neighborhood where you live.
2. There is a collection fee if you have a lot of garbage (five or more 45-liter garbage bags full). Please consult the Waste Collection Office.
3. Do not leave items that are not for collection in or near the garbage collection station.
4. Dog and cat carcasses are collected for a fee. Please consult the Waste Collection Office.
5. When disposing of business-related burnable or unburnable garbage, or used paper, please attach the Kita City garbage collection fee sticker.

**Notes:** 1. Please be sure to consult the Waste Collection Office concerning other garbage-related questions rather than deciding on matters yourself, such as whether certain items can be collected, whether there is a pickup service for the item, and whether there is a collection fee.

2. Illegal garbage disposal is punishable by law (five years or less in jail, or a fine of ¥10,000,000 or less, or both).

#### **Inquiries:**

Recycling and Waste Management Section,	Tel: 3908-8539
Kita City Waste Collection Office,	Tel: 3913-3141
Household Appliance Recycling Reception Center,	Tel: 5296-7200

